

# QUICK USER GUIDE

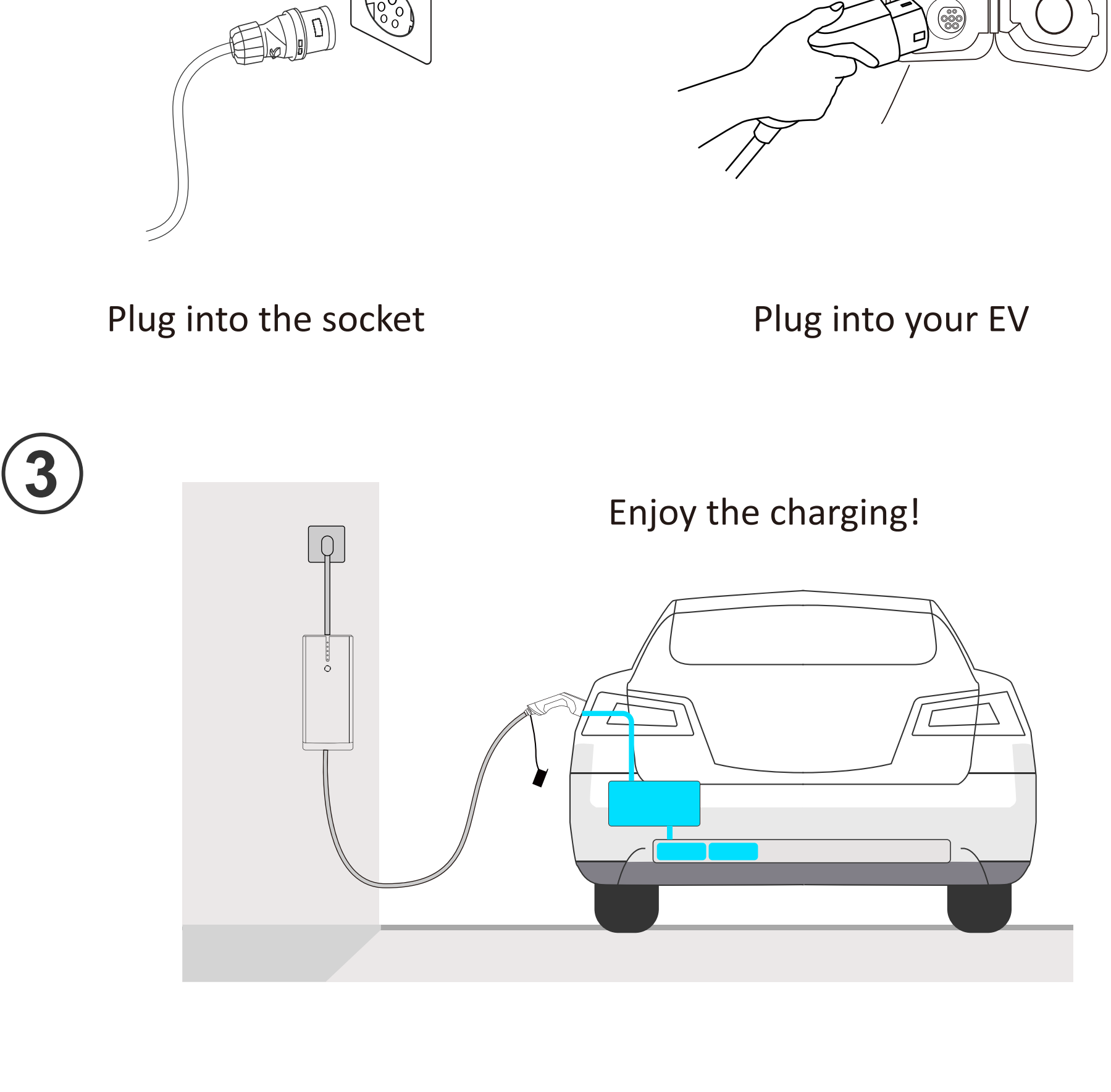
## EV Portable Charger

Model: BN60

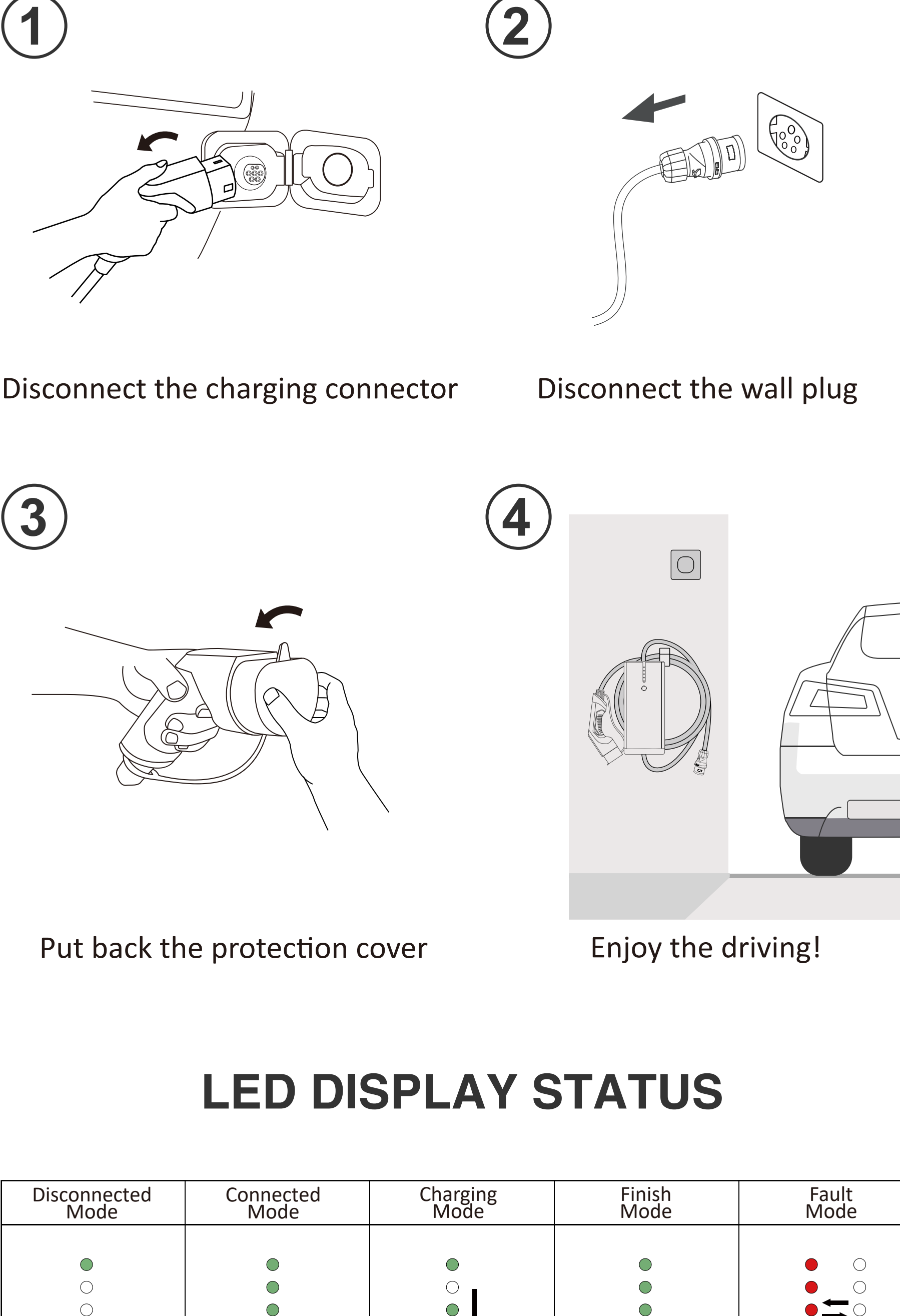


## INSTRUCTION FOR USE

### START



### FINISH



## LED DISPLAY STATUS

Disconnected Mode	Connected Mode	Charging Mode	Finish Mode	Fault Mode
Light	Light(Green)	Rolling(Green)	Light(Green)	Flashing(Red)

## FAULT CODE TABLE

Fault Code	Cause of failure	Display mode
Fault code 1	CP Error	Blink 1 time
Fault code 5	Over Current	Blink 5 times
Fault code 6	Short Circuit	Blink 6 times
Fault code 7	Leakage Protection	Blink 7 times
Fault code 8&9	Temperature sensor 1 &2 Over temperature protection	Blink 8 times & Blink 9 times
Fault code 11	Emergency stop	Blink 11 times

## GOOD TO KNOW

- 1.This is a Mode 2/ Level 2 EV charging cable only for EVs with Type 2 inlets. Don't use it for EVs with other types of inlets.
- 2.This cable has complicated internal structure. Any questions, please contact our Customer Service first. Please do not take it apart without any professional technical support.
- 3.Don't use it in the water.
- 4.This product is only for EV charging. Please don't use it for any other purposes, including hauling, binding and so on.

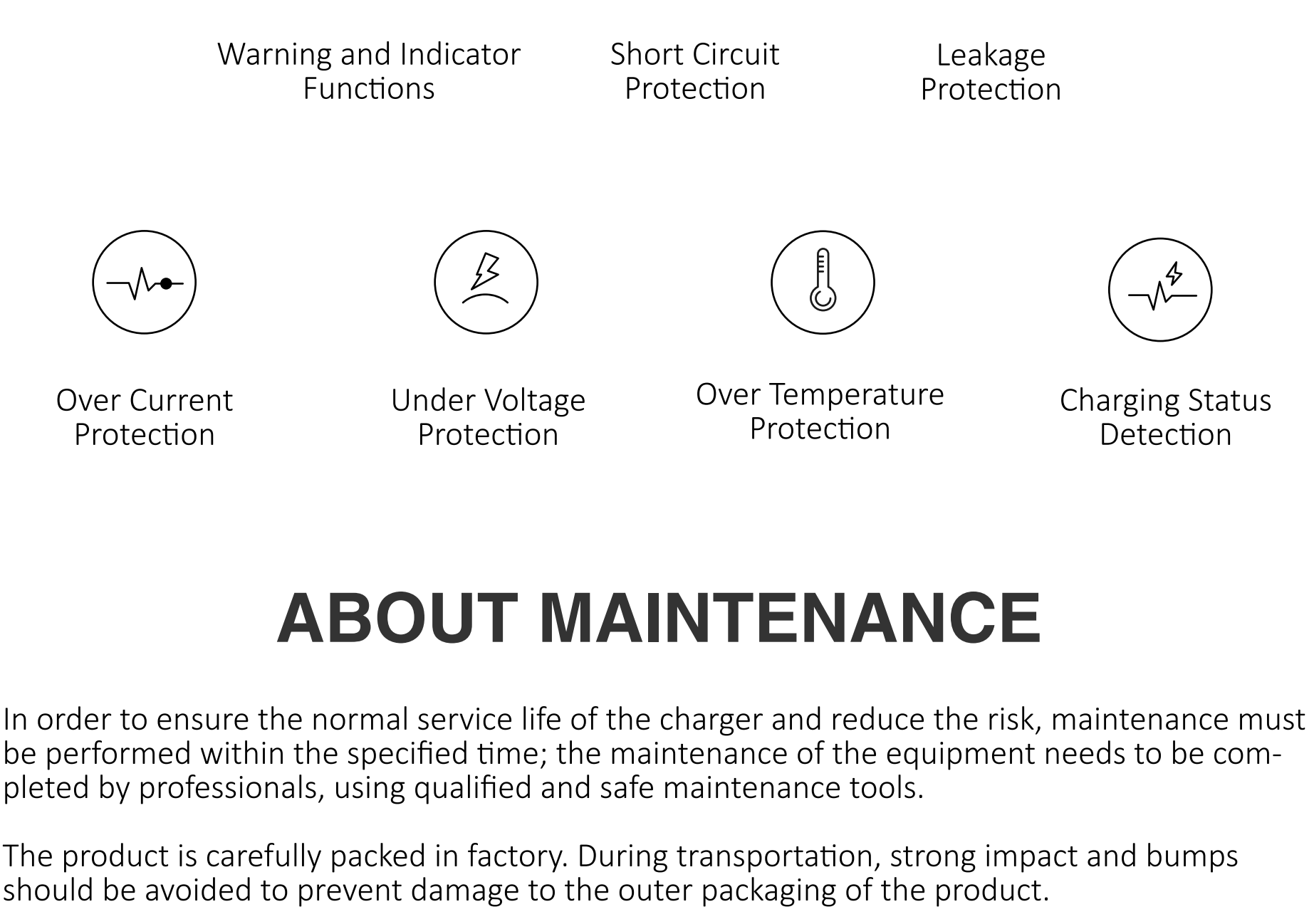
## PROFESSIONAL SPECIFICATION

Model	BN60	Certificate	CE
Protection	IP66	Operating Current	16A (MAX)
Voltage Range	400V±10%	Maximum Power	11kW
Auto Charge Recovery	Yes	Current Adjustable	No
Warranty	2 Years	Service Life	>50000 times
Insulation Resistance	>1000MΩ	Withstand Voltage	2000V
Inlet Cable Spec	5*2.5mm²	Shell material	ABS + PC Plastic Shell
Contact Impedance	0.5m Ω Max	Cable Diameter	13,5(mm)/0.53(in)
Working Temperature	-25 ℃~+40 ℃	Contact Pin	Copper alloy, silver or nickel plating

## KEY FEATURES

- Quick & Easy Operation:**  
Just connect the plug to the EV's inlet, and the charger will automatically detect the connection status and handshaking protocol, then start charging.
- Rugged Enclosure:**  
To present top notch quality, brand-new design and solidly built high strength PC Alloy are used.
- Intelligent Chip:**  
Automatically repairs minor charging problems while charging. The light will blink in different ways to indicate different problems to help you know the real-time charging situation.
- High Compatibility:**  
Compatible with all EVs featuring Type 2 inlets, ensuring 100% accuracy and effectiveness.
- IP66:**  
Its unique waterproof design ensures that you can use it anytime.
- Safety Assurance:**  
Already passed all the tests of CE. All kinds of protective measures are taken to ensure the safety of every user.

## SECURITY PROTECTION



## ABOUT MAINTENANCE

- In order to ensure the normal service life of the charger and reduce the risk, maintenance must be performed within the specified time; the maintenance of the equipment needs to be completed by professionals, using qualified and safe maintenance tools.
- The product is carefully packed in factory. During transportation, strong impact and bumps should be avoided to prevent damage to the outer packaging of the product.
- The product should be placed at an ambient temperature of -25℃~+55℃ with a relative humidity of less than 95%. The ambient air should not contain acids, alkalis or other corrosive gases and explosive gases. It should also be away from rain, snow, wind and sand.

## OVERHAUL

- Mode 2/Level 2 charger has been subject to stringent quality inspections. From the day of purchase, any quality problems during the use of the equipment correctly within two years can be reported to the dealer for the after-sales service.
- Any incorrectness to handle, install, misuse, repair the product caused by the user's own neglect or any natural damage resulting in direct damage and failure to the product are not covered by the warranty.
- This quality guarantee is only for original buyers.

## SECURITY WARNING

- ⚠ ATTENTION**
1. Only used for EV charging.
  2. Do not use the device box if it is damaged.
  3. Do not use this device with an extension cord or adapter.
  4. Please do not open up any part of the device by yourself.  
Please do not disconnect while it is working.
  5. Please follow the user manual to use this device.
- ⚠ IMPORTANT SAFETY INSTRUCTIONS WARNING!**
- ▲ Regularly check whether the portable charger has visible damage, Using a damaged product may cause electric shock.
  - ▲ Make sure that all safety facilities are available at all times and then test regularly to ensure safety.
  - ▲ If a 'Ground Error' occurs, it must be assumed that the earth wire carries voltage. Please check the circuit and make sure that there is no high-power in the whole circuit system.
  - ▲ Before powering on the device, please confirm that it is properly grounded to avoid accidents.
  - ▲ All metal parts should be insulated to prevent short circuit caused by the touch of the tool with the metal frame.
  - ▲ Do not modify, retrofit, or change any part by yourself under any circumstances.
  - ▲ To ensure a stable service life and operation of the charging cable, operation environment should be kept clean and with constant temperature and humidity. The charging cable must not be used in the presence of volatile gas or flammable atmosphere.
  - ▲ Please confirm that the input voltage, frequency, circuit breakers and other conditions have already met the specifications before it is powered on.
- ⚠ NOTE**
- Please do not use it for other purposes except electric car charging. Do not try to disassemble the device by yourself under any circumstances. Otherwise, the internal precision parts may be damaged, and you will not be able to apply for after-sales service.